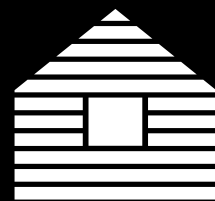


NEW  
HAMP SHIRE  
*Interiors*



## Contents

	Page
Our Shutters	4
Choosing your Shutters	10
Shaped Shutters	16
Shutters Materials	17
What's the Next Step?	19
Our Blinds	20
Wainscoting (Wall Panelling)	22
Radiator Cabinets	26
Contact Us	27





# Hello

**New Hampshire Interiors is the family business of the Rice family; Brendan Rice, his daughter Sarah and son Barry. New Hampshire Interiors is the evolution of their ShutterCo business, which remains the premier Interior plantation-style shutter company in Ireland.**

Back in 2005, the company was based at a facility outside Ashbourne, Co. Meath, where they would manufacture shutters after travelling to California for research & training. As the reputation of the company went from strength to strength, ShutterCo opened a showroom in the heart of Monkstown village, South County Dublin.

As the popularity of ShutterCo grew, the family decided to evolve the company to incorporate various other aspects of interior design, mainly in the form of Wainscoting (interior wall panelling) & accompanying Radiator cabinets. While still very much involved in the shutter & window covering business, the company launched a new brand; 'New Hampshire Interiors', which incorporates the additional products and services now offered by the company.

In addition to their bespoke furniture, the Monkstown showroom also stocks a selection of soft furnishings & homeware. The stock is updated seasonally and the latest additions to the range can be found at [www.NHinteriors.ie](http://www.NHinteriors.ie) or on their Facebook page.

**Sarah** as a background in display design and has a flair for interiors. She is head of sales and is available for complimentary in-home design consultations, where she offers information on the company's products, as well as general interior design advice.

**Brendan Rice** is Father to Sarah & Barry. He is a born entrepreneur with over 30 years' experience owning and operating businesses. He has transformed and evolved the business to adapt to the highs & lows of Ireland's erratic economy during that period.

**Barry** has a background in Architectural technology and has worked in the areas of shutter manufacturing & installation. He now coordinates the installations, as well as handling the administration of the company.

## *Transform ...*

**your home with our stylish & versatile shutters, offering you complete flexibility with light, privacy & insulation.**

“

*Delighted with our new shutters. The advice and guidance from Sarah was straightforward and clear and the fitters arrived on time, carried out the work with minimum fuss and took the time to advise on how to handle and look after the shutters. Highly recommended!*

Colm Nagle







*Many thanks for a great Job, much obliged to Darius for replacing the magnets. We are delighted not only with the Shutters but with the whole service from Sarah's first visit , to Barry's courtesy and kindness and Darius's efficiency and expertise. A job well done. Thanks.*

Mary



*We don't take shortcuts!*

Our shutters are 100% bespoke.  
Your shutters are custom designed & manufactured  
to your exact requirements.





*Our Shutters have ...*

distinctive style and versatility. Shutters are a timeless trend that allow for privacy and intimacy, while also providing valuable insulation.





*We've used ShutterCo on 4 separate occasions, and our house is now fully kitted out in lovely shutters. They look great, and the company was a pleasure to deal with from start to finish. I would definitely recommend them to others*

Glen Mundy

#### **Our Shutters are:**

- Child & Pet safe with no cords
- Excellent control of light & airflow
- Adjustable louvres regulate light, ventilation & privacy
- Ideal choice for thermal & sound insulation
- Investment & curb appeal
- UV protection for furniture, furnishings & flooring
- Low maintenance & allergy free
- Easy to use & clean
- Custom made to any shape

## Choose ...

from a wide range of design options to truly personalise your shutters. Our selection of styles, shapes and finishes will add an exciting dimension to any home.



## You asked...

### **Do you supply Nationwide?**

Yes. All 32 counties.

### **Do I get a Warranty?**

Yes. All our shutters come with a 3-year manufacturer's warranty.

### **What's the Lead Time?**

The lead time for standard shutters is 9-10 weeks, and custom shapes is approximately 12 weeks.

### **How long does the Fitting take?**

This can vary, but approximately 1 hour per window. Large shutters, bay windows and custom shapes will take a little longer.

### **Can I Open them?**

Yes. As well as being able to open the louvres, all our shutter panels are hinged to allow for easy opening and access to the window.

### **Are they Blackout?**

Shutters aren't a complete blackout solution, but most will find the level of light insulation perfectly adequate for sleeping. If required, we can install low-cost, blackout roller blinds behind the shutters. This combination offers almost total light block.

### **Do I need Curtains?**

No. Shutters perform all the functions of curtains. However, shutters do not interfere with curtains and some people elect to have their window dressed in both shutters and curtains simultaneously.

### **Are they suitable for Every Room?**

Yes. From a small bathroom window to large kitchen sliding doors. We'll help you make the right design choices to ensure each shutter is appropriate for its window.



“

*Very pleased with my shutters!  
Lovely family business and a  
pleasure to deal with.  
Appointments were scheduled with  
ease and shutters fitted on time  
with no delays and no mess. Would  
definitely use Shutterco in the future.*

Fiona

**Are they Waterproof?**

To varying degrees. Hardwood shutters are a good choice for bathrooms & kitchens. For areas of extreme moisture, we offer a fully waterproof shutter made from a composite material called ABS. Our waterproof shutters resemble wood and are fitted with stainless steel hinges as standard.

**Do I need to Paint them?**

No. Our shutters come with a durable, high quality spray finish. We don't normally recommend painting as doing so will void the manufacturer's warranty. However, if you wish to have them painted, we recommend using a reputable and experienced painter.

**Are they easy to clean?**

Very! For regular maintenance we'd recommend just a light dusting. For more intensive cleaning, simply wipe with a clean, damp microfibre cloth, mixed with warm water & a small amount of dish washing liquid. Do not use sprays, bleach or solvent based cleaners as doing so may lead to paint damage.

# Shutter Styles



## Full Height

Our full height shutters are our most popular choice. Simply put; they cover the full window height in a single panel!



## Tier on Tier

Independent panels top and bottom provide increased flexibility and allow you to maximise light without compromising on privacy.

Tip: Divider rails and Split-tilt systems (pages 14 -15) offer similar adjustability.



## Café Style

Reminiscent of chic, continental Café's and ideal for ground level windows and town houses, where darkness is never required. Only a portion of the height of the window is covered, leaving the top section open.



## Solid Panels

Solid Panel Shutters don't have louvres and instead feature a solid panel insert. This creates a traditional 'storm-shutter' appearance and is often used in room dividers. Solid panel shutters offer great insulation against heat, light and sound, and can be mixed with louvres above a divider rail to offer a 'best of both worlds' finish.



# Shutter Applications

## Tracks & Room Dividers

Track systems are generally used for extra wide windows, where more than the recommended number of panels are required to cover the window. The track takes weight off the hinges and allows for smooth & easy operation. Tracked shutters can make excellent room dividers.



## French Doors

Our shutters aren't just for windows! Using a customised door handle cut out, we build your shutters to allow for mounting directly to French doors.



## Bay Windows

One of our most common applications is installations to Bay Windows. Our shutters can be designed with load bearing posts integrated into the frame, allowing for bespoke bay window solutions.



# Shutter Options



## Colours & Woodgrains

Your Shutters can be painted or stained in an extensive choice of finishes. If by any chance we don't have that colour you desire, no problem. We can perform a colour match from a range of exclusive paint suppliers such as 'Farrow & Ball' and 'Colourtrend'.

## Louvre Sizes

Louvre sizes vary from 2", right up to 5.5". Generally speaking, the bigger the louvre, the more light can enter the room. Wider louvres tend to look better on larger windows and vice versa.

## Divider Rails

Divider Rails work great on taller windows and doors, but they may be incorporated into any design. An extra horizontal rail features in the panel, (often at the mid-point, or aligning with a window mullion). This allows the louvres above and below the rail to operate independently of one another (like the Tier-on-Tier design, without the extra panels).



### Tilt Rods

The tilt-rod is the mechanism that connects a string of Louvres. All the louvres on a single rod will move uniformly. Shutters can be customised with 3 different Styles of Tilt Rod.



### Offset Tilt

A twist on the centre tilt; the Offset Tilt works in the same way. However, the tilt rod is positioned towards the side of the panel to create a more modern feel, while still maintaining the established tilt-rod mechanism.



### Centre Tilt

This time-honoured design is as old as shutters themselves and recommended for clients seeking to create a traditional finish in their homes.



### Hidden Tilt (Clearview)

This is a unique design whereby the mechanism that connects the louvres is fully concealed inside the vertical stile. Doing this allows for a clean minimal look and maximises the view through the window.



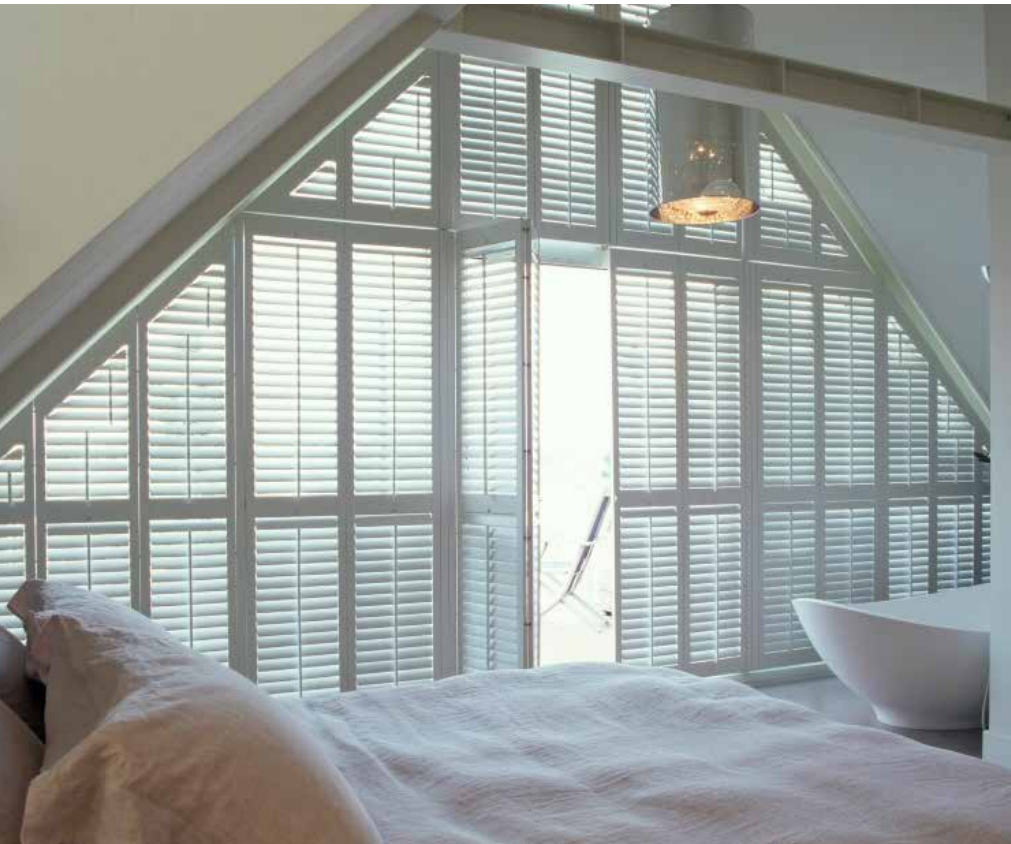
### Frames

Whether your taste is for simplicity or lavishness; We've got you covered! From minimal & contemporary simple L-frames, to beautifully detailed traditional Moulded Z-frames, and a range of options in between.



## *Shaped windows ...*

can be difficult to find suitable window coverings for. Our shutters can be custom built to fit a wide range of curved or angled windows.



# Shutter Materials

## Hardwood

Hardwood is the optimum material for shutter construction. It provides an ideal combination of high strength and light weight. When it comes to design options, our Hardwood shutters offer the widest range choices to provide you with the widest range of choice.

## MDF

MDF is more competitively priced than Hardwood. It is a tough and reliable material which can be a good alternative to Hardwood. A couple of considerations before opting for MDF; the extra weight may make it a poor choice for wide windows, and it can be more inclined to absorb moisture making it unsuitable for areas of moisture.

## Waterproof (ABS Composite)

Our Waterproof Shutters are constructed from a composite ABS material. These come fitted with stainless steel hinges fitted as standard and are an ideal choice for areas of excessive moisture such as bathrooms and kitchens.







## What's the next step?

So... you're interested in Shutters and you're wondering what to do next. Well, you have choices...



### Want to get a closer look?

Our Showroom is located in the heart of Monkstown Village, County Dublin. We're open Monday-Saturday, 10am-5pm. We'd be delighted if you could stop by to view our extensive range on display.



### Want to learn more?

To learn more about our shutters, view our videos & full gallery of images, or send us an email; head over to our dedicated shutter website; [www.ShutterCo.ie](http://www.ShutterCo.ie).



### Want a Consultation?

We offer a free no-obligation in-home consultation. Our consultation service aims to make your design process as hassle free as possible. Our designer will call to see you, take measurements, show you samples and offer design advice to help you make all the right choices.

To speak to us about arranging your consultation, call us on (01) 835 9555

## Then what?



### Measuring

Once you're happy to proceed, we undertake a full survey of your windows. Each shutter is custom made for you and we measure using state of the art laser measuring devices for guaranteed accuracy.



### Installation

Lead time for shutters is around 8-10 weeks. Once we receive your shutters, we'll contact you to arrange an installation time that suits you. We install shutters nationwide and our fitters are tidy, efficient and friendly. Installation generally takes roughly 1 hour per window.

*Say hello by Calling, Visiting  
or Clicking ...  
We'd love to hear from you.*

## Roller Blinds



*Don't want shutters on that window? No problem! Have a look at our blinds.*

We offer a comprehensive range of window blinds with a full design & finish service. We have carefully selected the best blinds from a range of Irish suppliers, to offer you the finest range of high-quality window blinds in the style you desire.

Our experienced design consultant will talk you through a wide range of available options to find the blinds that are just the right fit for your décor.

“

*Professional and helpful service from Sarah at ShutterCo. I'm very pleased with the shutters, blinds and cushions I purchased. Competitively priced too.*

Niamh





### Smart Blinds

We offer blinds compatible with modern in-home automation. Have your blinds come up and down automatically each day, and the push of a button, or by using your voice.





*Wainscoting  
(Wall Panelling)*





### Wainscoting Design

All our wainscoting is fully bespoke and customisable. Any of our designs can be tweaked to your specifications, and can be applied to half height, three-quarter height or full floor-to-ceiling applications.

### Feature Walls

Feature walls provide great opportunities to experiment with colour and pattern. Wainscoting can be a great way to create a Feature Wall by injecting just the right amount of interest to a room without overwhelming the space.

### Wainscoting Material

We use different materials for different ranges of wainscoting, carefully selected to best suit the application.

Most of our panelled ranges are constructed from the finest quality, Irish -made, moisture resistant, medium density fibreboard (MDF). The MDF is manufactured in Ireland, is free from any defects or knots and will not warp. Where the application dictates, we sometime use high grade timber profiles.

*Great service from New Hampshire Interiors. Brendan came out to my house and took all the measurements offered great design advice. I'm delighted with how the wainscoting has turned out. It's really transformed my home. Huge thanks to the whole team.*

Angela



# *Picture Frame Wainscoting*





### Decorative Panel

Decorative Panel is widely considered to be the classic style of Wainscoting. This traditional and time-honoured design is widely seen in hotels, restaurants and stately homes.

Decorative Panel wainscoting is an excellent choice for hall, stairs & landing applications, but is equally effective in dining & living rooms.

The intricacy of the design can be varied by selecting either understated or extravagant trims, skirting, dado-rails etc.

### Flat Panel Wainscoting (Classic Shaker Style)

Flat Panel Wainscoting (AKA Shaker Style) is constructed in a similar fashion to Decorative Panel Wainscoting. However, moulded trims are not included in the panels. Likewise, skirting-boards and chair-rails are kept simplistic and minimal. By doing so, a more contemporary and understated design is achieved.

Flat Panel Wainscoting can make a great addition to 21st century homes as its design is consistent with the modern-day design of the building.

### Beadboard & Shiplap panelling

**Beadboard** (Vertical), is a classic wall covering for informal spaces like kitchens, bathrooms, and back hallways. Beadboard wainscoting is available with a simplistic V-groove, or with a slightly more decorative beading detail.

**Shiplap** (Horizontal) Panelling is inspired by traditional exterior cladding. Used as wainscoting, shiplap creates a cottage-like, farmhouse or shabby chic effect. It is especially good at turning a dull and cold space into a warm, cosy and welcoming interior. You can use it to accent a specific part of a room such as the wall around the hearth, the space above the tub or the area above your bed.

### Picture Frame Wainscoting

We'll let you in on a little secret: A lot of the fancy woodwork you see inside old houses is nothing more than deft layering, bits of simple moulding combined to mimic ornate profiles. Picture frame wainscoting transforms the entire wall into a wainscoting panel at a fraction of the cost of applying any panels. If you have a plain room, you can achieve stunningly ornate finishes on a relatively low budget.



# *Radiator Cabinets*



### Simply Part of the Bigger Picture

Because we custom build our radiator cabinets in-house, we can use the same profiles and materials we use in our wainscoting. This allows us to construct cabinets that beautifully complement our wainscoting.

Choose from our range of cover designs including the contemporary New England design, to the highly detailed Fitzwilliam. All our Radiator cabinets can be finished by spray or hand painting.

### Unique Grilles add extra customisation

Our cabinets come with painted MDF grilles as standard, but you can choose to upgrade to a stylish metallic Grille. We offer an extensive selection of decorative grilles in finishes such as Chrome, Brass & Copper

“

*Really pleased with our radiator cabinets, and the level of service from New Hampshire Interiors. Would highly recommend.*

*A beautiful well fitted product.*

Paula

*To find out more about any of our Products or to get an estimate just Call, Visit or Click!*



### Call

If you'd like to schedule a consultation or have any questions regarding our products, you can call us on (01) 835 9555



### Visit

If you'd like to see our products on display, you could pay us a visit. Our Showroom is located in the heart of Monkstown Village, County Dublin. We are open Monday-Saturday, 10am-5pm. We'd be delighted if you could stop by.



### Click

Learn more about our company, products and services on one of our websites. [www.ShutterCo.ie](http://www.ShutterCo.ie) or [www.nhinteriors.ie](http://www.nhinteriors.ie). And of course, you'll find us on all the popular Social Media platforms!

*We look forward to welcoming you.*



101 Monkstown Road, Monkstown, Co Dublin, A94 Y8D8 (01) 835 9555 [www.nhinteriors.ie](http://www.nhinteriors.ie)